

IGLOO S2300

Belt spreader for small vehicles
in three hopper sizes:
800, 1100 and 1400 liters.




epoke[®]

– de-icing of roads!

EPOKE IGLOO S2300

Functional design and quality

IGLOO S2300 is width and quantity compensated and controlled by the EpoSet remote control.

The spreader is driven by the vehicle hydraulic system or a Honda petrol engine (5.5 HK).

Hopper sizes of 800-2000 liters are available through combination of basic hoppers and extension frames, whereby the optimal hopper capacity may be adapted to the individual vehicle. The low own weight and center of gravity of IGLOO makes it ideal for installation on small trucks and carrying vehicles.

The IGLOO-series is characterized by its clean-looking design, including the very practical machine house. This makes the spreader very service-friendly and easy to maintain resulting in low operating costs.

Basic dosage adjustment is performed at the dosing gate. The profiled conveyor belt works well with all material types and ensures steady and even material supply.

The stainless steel spreading disc featuring a working width of 1.5 – 6 meters makes the spreader well suited for action on bike paths, small roads, parking lots etc.

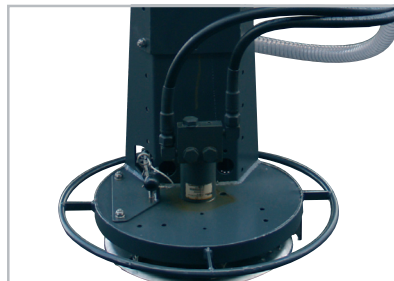
IGLOO surface treatment consists of sandblasting, rust protection with a 2-component zinc dust primer and a 2-component top-coat.

Optional extras:

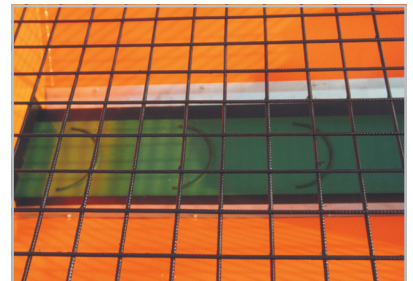
- Prewetting system
- Petrol engine
- Folding cover
- Off-loading systems
- Stainless steel version
- Relief plate
- Center of gravity stabilizer
- Extension frame



The EpoSet remote control is installed in the driver's cab for control of start/stop of spreading, spreading width, orange warning light and working lamp.



The spreading disc and funnel are made of stainless, lacquered steel.



The spreader is equipped with a profiled conveyor belt to achieve even emptying of the hopper.



Epoke® A/S
Vejenvej 50, Askov
DK-6600 Vejen
Tel. +45 76 96 22 00
Fax +45 75 36 38 67
epoke@epoke.dk
www.epoke.dk



In order to maintain the high and uniform product standard Epoke® A/S has been certified by Lloyd's register to ISO 9001:2008.
TLG B-3 approval
GS approval
E1 approval
RoHS directive
WEEE directive

